



**39" 2560x1440 QHD165Hz E-LED  
Curved Gaming Monitor**

## **INSTRUCTION MANUAL**



**MODEL: DGVIEW390**



## Precaution

Before using this product, please read this User Manual carefully and keep it well

---

- Keep the monitor away from water sources or damp places, such as bath rooms, kitchens, basements and swimming pools.
- Make sure the monitor is placed on a flat surface. If the monitor falls down, it may cause human injury or device damage.
- Store and use the monitor in a cool, dry and well ventilated place, and keep it away from emission and heat sources.
- Do not cover or block the vent hole in the rear casing, and do not use the product on a bed, sofa, blanket or similar objects.
- The range of the supply voltage of the monitor is printed on the label on the rear casing. If it is impossible to determine the supply voltage, please consult the distributor or local power company.
- If the monitor will not be used for a long period, please cut off the power supply to avoid electric shock in rainy days and damage due to abnormal supply voltage.
- Please use a reliable grounded socket, Do not overload the socket, or it may cause fire or electric shock.
- Do not put foreign matters into the monitor, or it may cause short circuits resulting fire or electric shock.
- Do not disassemble or repair this product by self to avoid electric shock. If faults occur, please contact the after-sales service directly.
- Do not pull or twist the power cable forcedly.
- There is a polarizer layer (not a protective film) on the surface of the screen. Do not peel it off, or the product may be damaged and the warranty will be invalid.

## Package Content

### Packing list

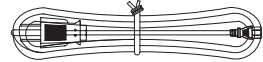
- Please check that the package of the monitor contains all parts. If any part is lost, please contact the distributor.
- The color and shape of parts may vary with models. Figures in this User Manual are for reference only.
- Cables supplied may vary with purchased products. Figures in this User Manual are for reference only.



Display screen



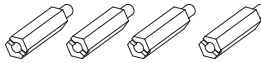
DP cable



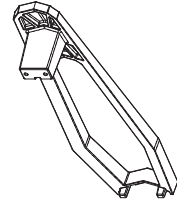
Power cable



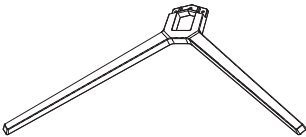
Screws



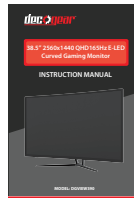
Mount hexagon irons



Stand



Base



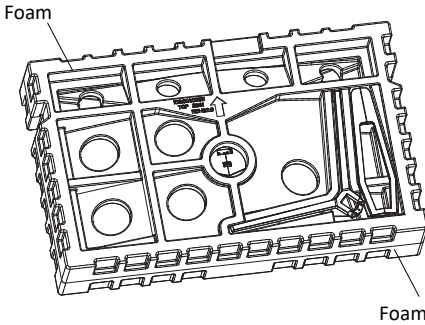
User Manual



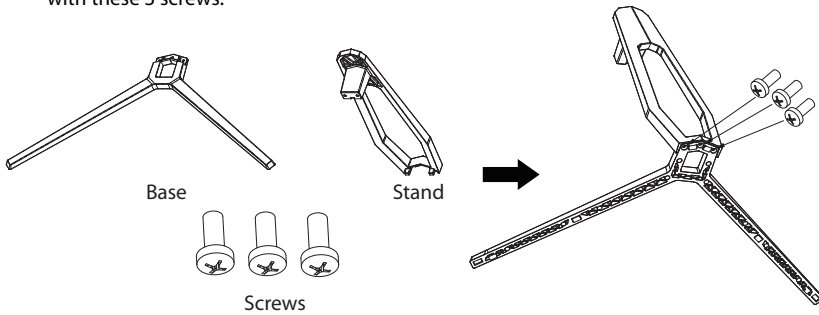
## Installation

### Installation of base

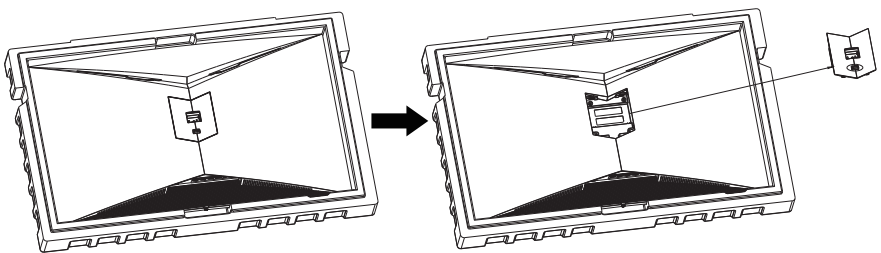
1. Open the package to take out foams wholly and put them on a flat tabletop.



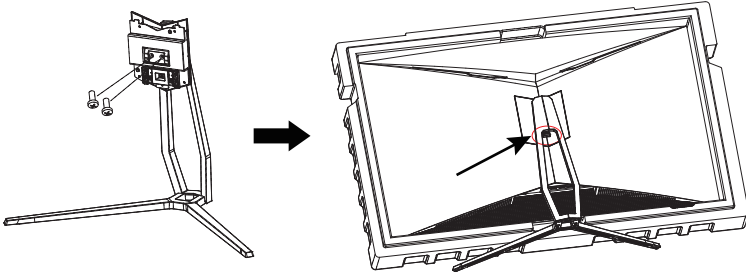
2. Take out the base, the stand and 3 screws and lock the stand to the bottom of the base with these 3 screws.



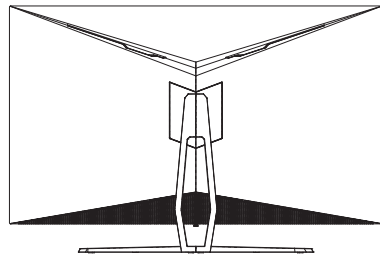
3. Take out the upper foam and toggle the quick-disassembly button to take out the rotary shaft set fastened on the whole monitor. (During disassembly of screws, do not take the screen out from the foam to avoid damage to the screen)



4. Lock the rotary shaft set taken out to the stand with 2 screws, align the base and stand components assembled in Step 3 to the slot of the machine and clip them. (Note: Slide the quick disassembly button up with the fingers to take out the base and stand components)



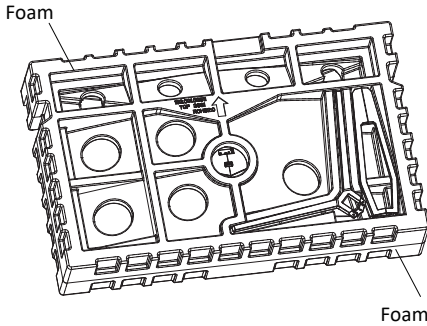
5. Simply hold the stand with hand to stand the monitor upright.



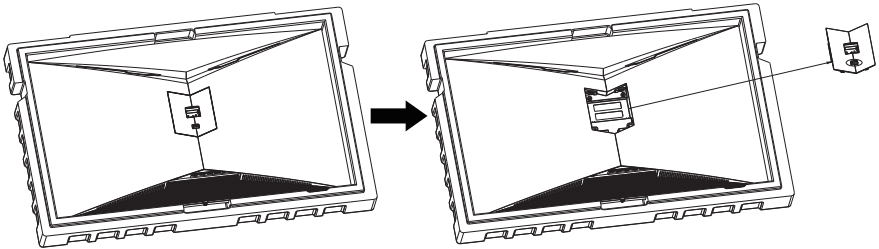
- ⚠** Note: During standing of the monitor, do not take out the monitor from foams, and do not pinch the liquid crystal screen with hand to avoid damage to the screen.

## Installation of mount (optional)

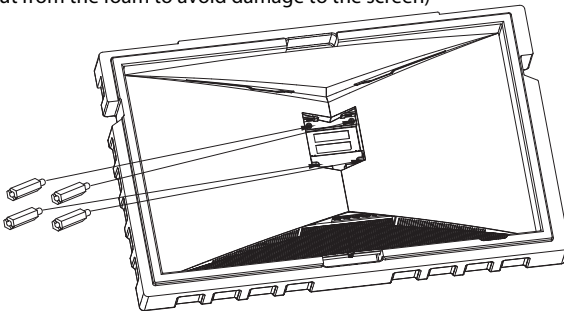
1. Open the package to take out foams wholly and put them on a flat tabletop.



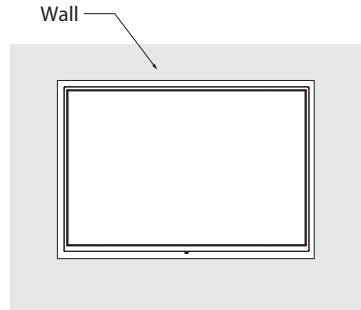
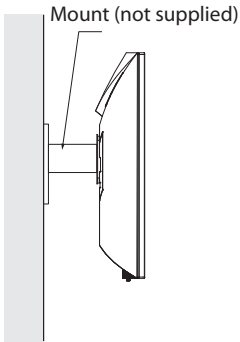
2. Take out the upper foam and toggle the quick-disassembly button to take out the rotary shaft set fastened on the whole monitor. (During disassembly of screws, do not take the screen out from the foam to avoid damage to the screen)



3. Take the mount studs out from the accessory bag and lock it to the whole monitor (Do not take the screen out from the foam to avoid damage to the screen)



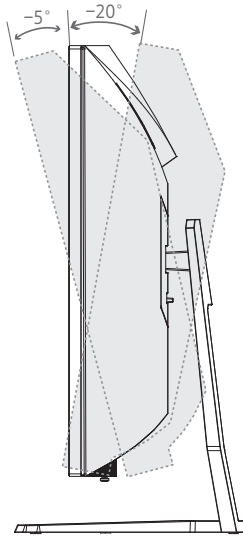
3. During padlocking of the monitor, do not pinch the screen with the hands to avoid damaging the screen. Install the mount to the mount stud by referring to the user manual of the wall hanging hard wall(purchased separately). Tips: the mounting hole distance of the mount for the product is 100×100mm.



- ⚠** Notes: To prevent the monitor on the mount from failing, please install it firmly and protect it fully. Do not place or hang any object on the mount, and the using height of the mount should be less than 2 meters.

## Adjustment of monitor

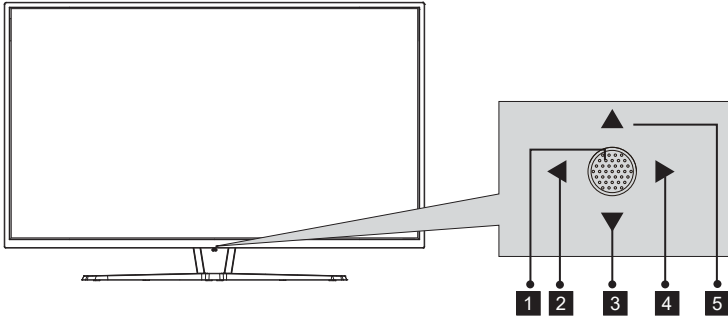
---



Tilting angle  
 $-5.0^{\circ} (\pm 2.0^{\circ}) - +20^{\circ} (\pm 2.0^{\circ})$

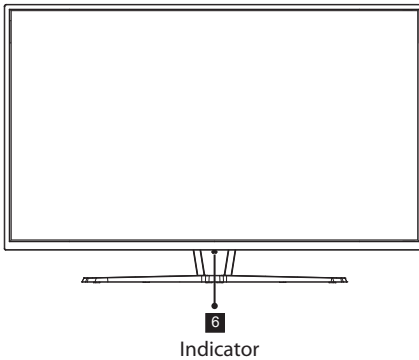
## Instructions for use

### Description of buttons



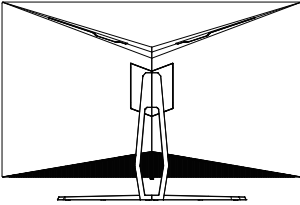
Button	Function
1	Power button: press to turn on/off the display
2	Exit/Hotkey: Press to return to the previous menu/Quickly switch color format
3	Down button: Press to move down in the menu/Quickly enter the scene mode
4	Menu key: press to enter the submenu/Quickly enter the main menu
5	Up key: Move up in the menu/Quickly enter the game cursor screen

### Explanation of indicator light



6. Steady Blue light indicates that the power is on and the monitor is operating normally. Red and blue flashing alternately means that no horizontal or vertical synchronization signal or no video input signal is detected, and the monitor is in standby mode. Please make sure your computer is turned on and operating normally, and check that all video cables are fully plugged in and/or connected to the monitor.

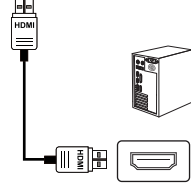
## Cable connection



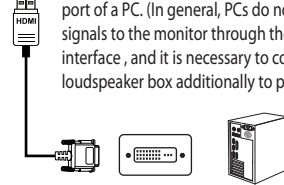
- \* The bottom interface configuration at the back of the monitor varies with products.
- \* Note: If the power cable or signal cable is damaged, you must replace it with special soft cables or special components purchased from the manufacture or maintenance department.

### HDMI interface

Use the HDMI cable to connect the HDMI IN port of the product to the HDMI OUT port of a PC.

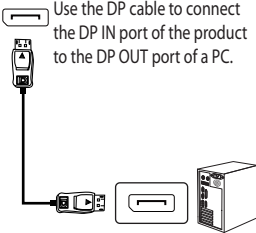


Use the HDMI-DVI cable (not included) to connect the HDMI IN port of the product to the DVI OUT port of a PC. (In general, PCs do not transfer video signals to the monitor through the DVI OUT interface, and it is necessary to connect a loudspeaker box additionally to play sounds of PCs.)



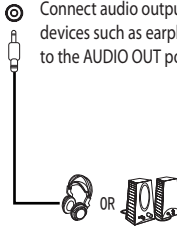
### DP Port

Use the DP cable to connect the DP IN port of the product to the DP OUT port of a PC.



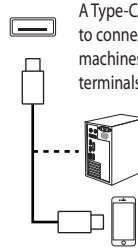
### AUDIO OUT

Connect audio outputting devices such as earphones to the AUDIO OUT port.



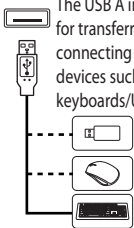
### Type-C interface

A Type-C line can be used to connect to data ports of machines and external terminals.



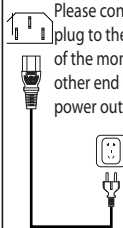
### USB interface

The USB A interface is used for transferring data and connecting various application devices such as mouses/keyboards/U disks.



### AC IN interface

Please connect the power cable plug to the corresponding port of the monitor, and connect the other end to a properly grounded power outlet.



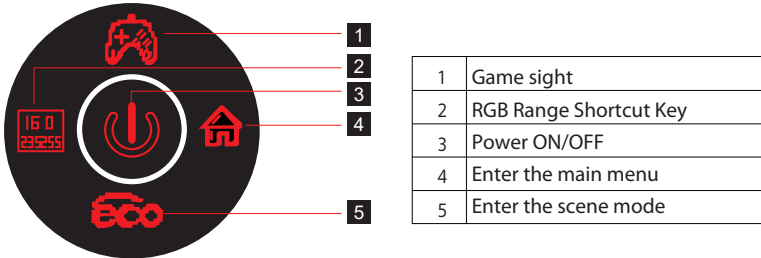
## OSD menu

### Menu description

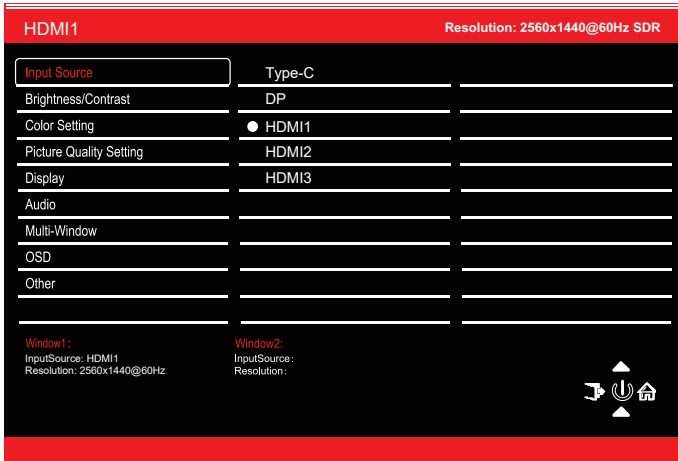
- The color and shape of the OSD menu of the actual computer may be slightly different from them shown in the figure.
- Specifications of the OSD menu may change with improvements of functions without prior notice.

The screen display (OSD) menu can be used to adjust settings of the monitor and is shown on the screen after the monitor is powered on and the button is pressed.

1. Press one of the buttons ( ) to activate the browser screen.



2. Press to enter the OSD screen.



3. Press or to scroll through the functions.

- Select the desired function, and press to enter the sub-menu.

- Press or to scroll through sub-menus, and press key to select and confirm the desired function.

- Press or to select one option, and press to confirm settings and exit from the current menu.

4. Press to exit from the menu screen



• Functions of the monitor vary with models, and the functions in this manual are for reference only.

Input Source	Type-C	N/A
	DP	N/A
	HDMI 1	N/A
	HDMI 2	N/A
	HDMI 3	N/A
Brightness/ Contrast	Brightness	0-100
	Blacklevel	0-100
	Contrast	0-100
	DCR	Off/On
Color Setting	Gamma	1.8/2.0/2.2/2.4/2.6
	Picttrue Mode	Standard/Photo/Movie/Game/FPS/RTS
	Color Temperature	Warm/Cool/USER
	Low Blue Light	0-100
	Hue	0-100
	Saturation	0-100
Picture Quality Setting	Sharpness	0-100
	Response Time	Off/High/Middle/Low
	Noise Reduction	Off/High/Middle/Low
	Dynamic Luminous Control	Off/On
	MPRT	Off/On
Display	Aspect Ratio	Wide Screen/4:3/1:1/Auto
	LedMode	Normal /Off/Flicker
Audio	Mute	Off/On
	Volume	0-100
	Audio Source	AutoSource/Type-C/DP/HDMI 1/HDMI 2/HDMI 3
Multi-Window	Multi-Window	Off/PIP Mode/PBP 2Win
	Sub Win2 Input	Type-C/DP/HDMI 1/HDMI 2/HDMI 3
	PIP Size	Small/Medium/Large
	PIP Position	TopRight/TopLeft/BottomRight/BottomLeft
	Swap	N/A
OSD	Language	English/简体中文/한국어/Русский/Español/日本語/Français
	OSD H-Position	0-100
	OSD V-Position	0-100
	OSD Transparency	0-100
	OSD Time Out	0-100
	OSD Rotation	Normal/90/180/270
Other	Adaptive-Sync	Off/On
	HDR	Off/On/Auto Detect
	Turn on Type-C Function	Off/On
	USB Update FW	Off/On
	Reset	N/A

## Specification

Product Name		LCD Monitor
Product model		DGVIEW390
Screen Size		39 inch (98cm)
Aspect Ratio		16:9
Viewing Angle		178°(H) / 178°(V)
Pixel pitch		0.333 (W) x 0.333(H) mm
Contrast ratio		4000:1(TYP)
Color		16.7M
Resolution		2560x1440
Refresh Rate		165Hz
Power Input		100-240V~ 50/60Hz, 2.2A The standard voltage and power supply may vary with countries, please refer to the label at the back of the product.
Product Dimensions	Without base	879.2*128.8*514.1mm / approx. 10 kg
	With base	879.2*275.4*582.4mm / approx. 11.6 kg
Tilting angle		Forward tilting-5°±2.0° ; Backward tilting+20°±2.0°
Height range		N/A
Rotation angle		N/A
Vertical angle		N/A
Environmental conditions	Action	Temperature: 0°C~ 40°C (32°F ~ 104°F) Humidity: 10%~90% RH (non-condensing)
	Storage	Temperature: -20°~ 60° (-4°F ~ 140°F) Humidity: 5%~95% RH (non-condensing)



HIGH-DEFINITION MULTIMEDIA INTERFACE

The terms HDMI and HDMI High-Definition Multimedia Interface, and the HDMI Logo are trademarks or registered trademarks of HDMI Licensing Administrator, Inc. in the United States and other countries.

**FC** This device complies with Part 15 of the FCC Rules. Operation is subject to the following two conditions:(1)This device may not cause harmful interference, (2)This device must accept any interference received,including interference that may cause undesired operation.

# Supported resolution and refresh rate

HDMI1 [2.0]	
<b>Detailed Timing</b>	
2560x1440@60Hz	
2560x1440@120Hz	
2560x1440@144Hz	
1280x1440@60Hz	
<b>Established Timing</b>	
720x400@70Hz-IBM.VGA	
640x480@60Hz-IBM.VGA	
640x480@75Hz-VESA	
800x600@60Hz-VESA	
800x600@75Hz-VESA	
1024x768@60Hz-VESA	
1024x768@75Hz-VESA	
1280x1024@75Hz-VESA	
<b>Standard Timing</b>	
1920x1080@60Hz-VESA STD	
1680x1050@60Hz-VESA STD	
1280x1024@60Hz-VESA STD	
1152x864@75Hz-VESA STD	
1280x720@60Hz-VESA STD	
1280x960@60Hz-VESA STD	
1600x900@60Hz-VESA STD	
<b>Video Timing</b>	
[63]1920x1080p@119.88/120Hz@16:9@1:1	
[1]1640x480p@59.94Hz@4:3@1:1	
[2]720x480p@59.94Hz/60Hz@4:3@8:9	
[3]720x480p@59.94Hz/60Hz@16:9@32:27	
[4]1280x720p@59.94Hz/60Hz@16:9@1:1	
[96]3840x2160p@50Hz@16:9@1:1	
[16]1920x1080p@59.94Hz/60Hz@16:9@1:1[Native=1]	
[17]720x576p@50Hz@4:3@16:15	
[18]720x576p@50Hz@16:9@64:45	
[19]1280x720p@50Hz@16:9@1:1	
[97]3840x2160p@59.94Hz/60Hz@16:9@1:1	
[31]1920x1080p@50Hz@16:9@1:1	

HDMI2 [2.0]	
<b>Detailed Timing</b>	
2560x1440@60Hz	
2560x1440@120Hz	
2560x1440@144Hz	
1280x1440@60Hz	
<b>Established Timing</b>	
720x400@70Hz-IBM.VGA	
640x480@60Hz-IBM.VGA	
640x480@75Hz-VESA	
800x600@60Hz-VESA	
800x600@75Hz-VESA	
1024x768@60Hz-VESA	
1024x768@75Hz-VESA	
1280x1024@75Hz-VESA	
<b>Standard Timing</b>	
1920x1080@60Hz-VESA STD	
1680x1050@60Hz-VESA STD	
1280x1024@60Hz-VESA STD	
1152x864@75Hz-VESA STD	
1280x720@60Hz-VESA STD	
1280x960@60Hz-VESA STD	
1600x900@60Hz-VESA STD	
<b>Video Timing</b>	
[63]1920x1080p@119.88/120Hz@16:9@1:1	
[1]1640x480p@59.94Hz@4:3@1:1	
[2]720x480p@59.94Hz/60Hz@4:3@8:9	
[3]720x480p@59.94Hz/60Hz@16:9@32:27	
[4]1280x720p@59.94Hz/60Hz@16:9@1:1	
[96]3840x2160p@50Hz@16:9@1:1	
[16]1920x1080p@59.94Hz/60Hz@16:9@1:1[Native=1]	
[17]720x576p@50Hz@4:3@16:15	
[18]720x576p@50Hz@16:9@64:45	
[19]1280x720p@50Hz@16:9@1:1	
[97]3840x2160p@59.94Hz/60Hz@16:9@1:1	
[31]1920x1080p@50Hz@16:9@1:1	

HDMI3 [2.0]	
<b>Detailed Timing</b>	
2560x1440@60Hz	
2560x1440@120Hz	
2560x1440@144Hz	
1280x1440@60Hz	
<b>Established Timing</b>	
720x400@70Hz-IBM.VGA	
640x480@60Hz-IBM.VGA	
640x480@75Hz-VESA	
800x600@60Hz-VESA	
800x600@75Hz-VESA	
1024x768@60Hz-VESA	
1024x768@75Hz-VESA	
1280x1024@75Hz-VESA	
<b>Standard Timing</b>	
1920x1080@60Hz-VESA STD	
1680x1050@60Hz-VESA STD	
1280x1024@60Hz-VESA STD	
1152x864@75Hz-VESA STD	
1280x720@60Hz-VESA STD	
1280x960@60Hz-VESA STD	
1600x900@60Hz-VESA STD	
<b>Video Timing</b>	
[63]1920x1080p@119.88/120Hz@16:9@1:1	
[1]1640x480p@59.94Hz@4:3@1:1	
[2]720x480p@59.94Hz/60Hz@4:3@8:9	
[3]720x480p@59.94Hz/60Hz@16:9@32:27	
[4]1280x720p@59.94Hz/60Hz@16:9@1:1	
[96]3840x2160p@50Hz@16:9@1:1	
[16]1920x1080p@59.94Hz/60Hz@16:9@1:1[Native=1]	
[17]720x576p@50Hz@4:3@16:15	
[18]720x576p@50Hz@16:9@64:45	
[19]1280x720p@50Hz@16:9@1:1	
[97]3840x2160p@59.94Hz/60Hz@16:9@1:1	
[31]1920x1080p@50Hz@16:9@1:1	

DP [1.4]	
<b>Detailed Timing</b>	
2560x1440@60Hz	
2560x1440@120Hz	
2560x1440@144Hz	
1280x1440@60Hz	
<b>Established Timing</b>	
720x400@70Hz-IBM.VGA	
640x480@60Hz-IBM.VGA	
640x480@75Hz-VESA	
800x600@60Hz-VESA	
800x600@75Hz-VESA	
1024x768@60Hz-VESA	
1024x768@75Hz-VESA	
1280x1024@75Hz-VESA	
<b>Standard Timing</b>	
1920x1080@60Hz-VESA STD	
1680x1050@60Hz-VESA STD	
1280x1024@60Hz-VESA STD	
1152x864@75Hz-VESA STD	
1280x720@60Hz-VESA STD	
1280x960@60Hz-VESA STD	
1600x900@60Hz-VESA STD	
<b>Video Timing</b>	
[63]1920x1080p@119.88/120Hz@16:9@1:1	
[1]1640x480p@59.94Hz@4:3@1:1	
[2]720x480p@59.94Hz/60Hz@4:3@8:9	
[3]720x480p@59.94Hz/60Hz@16:9@32:27	
[4]1280x720p@59.94Hz/60Hz@16:9@1:1	
[96]3840x2160p@50Hz@16:9@1:1	
[16]1920x1080p@59.94Hz/60Hz@16:9@1:1[Native=1]	
[17]720x576p@50Hz@4:3@16:15	
[18]720x576p@50Hz@16:9@64:45	
[19]1280x720p@50Hz@16:9@1:1	
[97]3840x2160p@59.94Hz/60Hz@16:9@1:1	
[31]1920x1080p@50Hz@16:9@1:1	

Type-C	
<b>Detailed Timing</b>	
2560x1440@60Hz	
1280x1440@60Hz	
<b>Established Timing</b>	
720x400@70Hz-IBM.VGA	
640x480@60Hz-IBM.VGA	
640x480@75Hz-VESA	
800x600@60Hz-VESA	
800x600@75Hz-VESA	
1024x768@60Hz-VESA	
1024x768@75Hz-VESA	
1280x1024@75Hz-VESA	
<b>Standard Timing</b>	
1920x1080@60Hz-VESA STD	
1680x1050@60Hz-VESA STD	
1280x1024@60Hz-VESA STD	
1152x864@75Hz-VESA STD	
1280x720@60Hz-VESA STD	
1280x960@60Hz-VESA STD	
1600x900@60Hz-VESA STD	
<b>Video Timing</b>	
[63]1920x1080p@119.88/120Hz@16:9@1:1	
[1]1640x480p@59.94Hz@4:3@1:1	
[2]720x480p@59.94Hz/60Hz@4:3@8:9	
[3]720x480p@59.94Hz/60Hz@16:9@32:27	
[4]1280x720p@59.94Hz/60Hz@16:9@1:1	
[96]3840x2160p@50Hz@16:9@1:1	
[16]1920x1080p@59.94Hz/60Hz@16:9@1:1[Native=1]	
[17]720x576p@50Hz@4:3@16:15	
[18]720x576p@50Hz@16:9@64:45	
[19]1280x720p@50Hz@16:9@1:1	
[97]3840x2160p@59.94Hz/60Hz@16:9@1:1	
[31]1920x1080p@50Hz@16:9@1:1	

## **Manufacturer's 1-Year Limited Warranty**

---

The manufacturer warrants that all parts and components are defect free in materials and workmanship for 1 year. This warranty is valid only in accordance with the conditions set forth below:

1. The warranty extends only to the original consumer purchaser and is not transferable. In addition, proof of purchase must be demonstrated.
2. This limited warranty is the only written or express warranty given by the manufacturer. Any implied warranty of merchantability or fitness for a particular purpose on this product is limited in duration to the duration of this warranty. Some states do not allow limitations on how long an implied warranty lasts, so the above limitation may not apply to you.
3. This warranty gives you specific legal rights. You may also have other rights which vary by state.

## **Procedure for Replacement or Return within the 1 Year:**

---

To return the product for replacement or refund within the 1 year, the original purchaser must pack the product securely and send it postage paid with a description of the reason for replacement or refund, proof of purchase, and include your order number on the package, to the following address:

Deco Gear  
80 Carter Drive  
Edison, NJ 08817

### **Other contact info**

Phone: 844-413-2646  
Customer Service Email: [customerservice@decogear.com](mailto:customerservice@decogear.com)



**dec**  **gear**®

---

物料号码			
厂内型号	39S1R	厂外型号	DGVIEW390
物料名称	说明书	品 牌	DECO GEAR
协力厂商		日 期	20211217
规 格	140x210mm		
要 求			
版 本	V01	设 计	蒋武波
确 认		核 准	