



35" CURVED 3440x1440 100Hz
GAMING MONITOR

INSTRUCTION MANUAL



MODEL:DGVIEW201

E-Waste: Deco Gear, a Beach Camera LLC company its licensees and affiliates, fully support all electronic waste initiatives. As responsible stewards of the environment, and to avoid violating established laws, you should properly dispose of this product in compliance with all applicable regulations, directives or other governance in the area where you reside. Please check with local authorities or the retailer where you purchased this product to determine a location where you can appropriately dispose of the product.

If your electronic device has internal memory on which personal or other confidential data may be stored, you may want to perform a data sanitization process before you dispose of your device to assure another party cannot access your personal data. Data sanitization varies by the type of product and its software, and you may want to research the best sanitization process for your device before disposal. You may also check with your local recycling facility to determine their data sanitization procedures during the recycling process.



Welcome

Congratulations on choosing to buy a Deco Gear product.

All products brought to you by Deco Gear are manufactured to the highest standards of performance and safety, and as part of our philosophy of customer service and satisfaction, are backed by a limited 1 Year Manufacturer Warranty.

We hope you will enjoy using your purchase for many years to come.

For More Deco Gear Products Visit Us

@

WWW.DECOGEAR.COM



Contents

Welcome	3
General Safety Instructions	5
Assembly	9
Getting Started	13
Controls and Connections	14
On Screen Settings	16
Troubleshooting	21
Supported resolution and refresh rate	22
How to adjust the refresh rate	24
Specifications	30
Other Useful Information	32



General Safety Instructions

Read this manual thoroughly before first use and keep it in a safe place for future reference, along with the completed warranty card, purchase receipt and carton. The safety precautions enclosed herein reduce the risk of fire, electric shock and injury when correctly adhered to. Follow all instructions and take notice of all the warnings.

IMPORTANT WARNINGS AND CAUTIONS

- Only connect this monitor to a mains socket with a protective grounding connection.
- Do not change or modify the appliance in any way.
- Only use the attachments/accessories specified by the manufacturer.

WARNING!

- Never tamper with any components inside the product, or any other adjustment controls not mentioned in this manual. All monitors are high voltage instruments.
- All repairs to this product must only be performed by qualified service personnel. There are no user-serviceable components within this product. Changes or modifications to this product, including changes to parts, components and constructional attributes that are responsible for safety and regulatory compliance, may result in non-compliant and unsafe operation of this equipment.



General Safety Instructions (Cont.)

Installation

Follow instructions: Only install this unit in accordance with the instructions in this manual. If the unit is not positioned in a sufficiently stable location, it can be potentially hazardous due to falling and can cause injury, particularly to children.

When deciding on where to put the unit, make sure the location is:

- Well ventilated, and away from damp and cold.
- Protected from overheating and away from direct sunlight.
- Away from moisture drips or splashes.
- Protected from excessive dust or grease.
- **Bookcase:** Do not install this equipment in a confined space such as a bookcase or similar unit.
- **Heat:** Do not install the unit near heat sources such as radiators, stoves or other audio visual equipment (including amplifiers) that produce heat.
- **Water:** Do not place containers with liquids (such as vases) or with small metallic objects on top of the unit. If liquid enters the unit or any metal object falls into the unit, it may result in short-circuit, fire or electric shock.
- **Fire or explosion:** Do not use or store flammable or combustible materials near the unit. Doing so may result in fire or explosion. Do not place any naked flame sources, such as lit candles, cigarettes or incense sticks on top of the unit.
- **Ventilation:** Install the unit at an adequate distance from the wall to ensure sufficient ventilation. If the temperature inside the unit rises, it may result in fire.

Electrical Safety and Cord Handling

- **Voltage:** Before installing this product, make sure your outlet voltage corresponds to the voltage stated on the appliance rating label.
- **Protect from moisture:** To reduce the risk of fire or electric shock, do not expose this product to rain or moisture; do not use it anywhere near water; do not touch the power plug with wet hands.
- **Damage:** Do not use a damaged power cord, plug or loose outlet. Doing so may cause an electric shock.
- **Power outlet:** Do not plug several devices into the same outlet. Doing so may cause the outlet to overheat and start a fire. Make sure the outlet is readily accessible during operation of the equipment.
- **Power plug:** Make sure the plug is properly installed before inserting it fully into the outlet. A loose or improperly inserted power plug may cause a fire.
- **Protect the cord:** Do not bend, twist or kink the power cord excessively. Do not allow anything to rest on or roll over the power cord. Doing so may cause a fire or an electric shock. Do not run the power cord near heat-producing appliances such as radiators, stoves or irons. The excessive heat could melt the insulation and expose live wires, resulting in fire or electric shock.

General Safety Instructions (Cont.)

- **Disconnect:** Always grasp the plug when disconnecting the power cord. Pulling the cord can damage the internal wire and may cause a fire.
- **Lightning storms:** Unplug this unit during lightning storms or when unused for long periods of time. Not doing so may result in fire or electric shock.

Usage Conditions and Restrictions

- **Adjustments:** Follow the instructions in this manual when installing and adjusting the unit. Only adjust those controls that are covered in this manual, as improper adjustment of other controls may result in damage. If this happens, unplug the unit and have it serviced by appropriately qualified personnel, or phone the After Sales Support line for advice.
- **Ventilation:** Do not cover the ventilation openings with items such as newspapers, tablecloths, curtains etc. as this could impede ventilation.
- **Cabinet slots:** Do not insert objects of any kind into this unit through the cabinet slots, as they could touch the current-carrying parts or short-circuit parts, resulting in fire, electric shock or damage to the unit.
- **Smoke or odour:** If you notice any unusual odours or smoke around the unit, immediately disconnect the unit from the outlet and contact the service centre. Failure to do so may result in fire or electric shock.
- **When not in use:** When not using the unit for long periods of time, disconnect the power cord from the wall outlet. Dust could accumulate over time on the unit and cause it to generate heat and ignite, or deteriorate insulation, which in turn may result in an electrical fire.
- **Climate:** If moving the unit from one location to another (for example from a cold environment to a warm one), allow sufficient time for the unit to acclimatise to the new location before switching it on. In tropical climates, keep the air surrounding the unit sufficiently dry to avoid condensation forming.
- **Moving:** When moving the unit, be sure to turn it off and unplug it from the wall outlet. Moving the unit with the power cord connected to the outlet may cause damage to the cord, resulting in fire or electric shock.
- **Usage restriction:** This product is not intended for use by persons (including children) with reduced physical, sensory or mental capabilities, or lack of experience and knowledge, unless they have been given supervision or instructions concerning use of the product by a person responsible for their safety.
- **Children:** Supervise young children to ensure they do not play with the monitor.

General Safety Instructions (Cont.)

Cleaning and Maintenance

- **Unplug:** To reduce the risk of fire and electric shock, always unplug the monitor before cleaning.
- **Cleaning:** Only use a soft, dry cloth for cleaning the unit; do not use a damp cloth. Never clean with industrial strength polish, wax, benzene, paint thinner, air freshener, lubricant, detergent or other chemicals. Wipe off any moisture, dirt or dust on the power plug pins with a clean, dry cloth.
- **Repair:** If the unit requires repair, contact the after sales support line; never disassemble or modify the unit or attempt to service it yourself.
- **Service:** Refer all servicing to qualified service personnel. Servicing is required when the unit has been damaged in any way, such as when the power supply cord or plug is damaged, liquid has been spilled or objects have fallen into the unit, when the unit has been exposed to rain or moisture, does not operate normally, or has been dropped.
- **Housing:** Never use rubber or plastic items when cleaning the casing to avoid damaging the paint. Wipe the housing with a soft, damp cloth and follow with a dry cloth.
- **LED Screen:** Wipe any dust off the screen periodically with a soft, clean and dry cloth. Do not use any fluid as this may damage the screen. Never wipe the screen with paper or with any hard substance.

CAUTION!

- DO NOT use any of the following solvents to avoid damage to the screen and housing: dillutent, spray cleaner, corrosive cleaner, acid or alkaline solvent, volatile oil, wax, benzene.
- Make sure the monitor is switched off and unplugged before any cleaning and maintenance.

Assembly

Please read the user manual carefully before performing the installation.

There are two ways to install the monitor: attaching the stand to the monitor, or wall-mounting the monitor using a display mount.

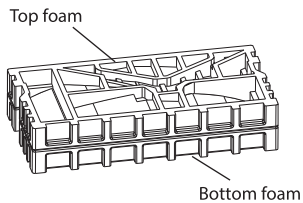
Stand Installation

Tools required:

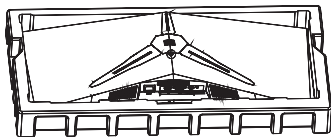
Phillips-head Screwdriver

Installing the Stand

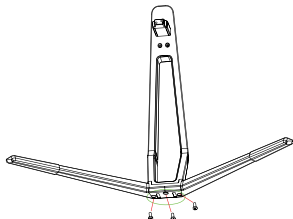
1. Open the box and take out the foam, put the foam on the flat floor or table.



2. When you open the box, keep the monitor panel in its protective foam.

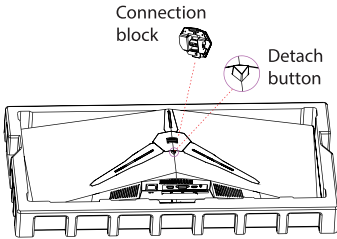


3. Take out the base and pillar, attached them and lock with 3 screws.

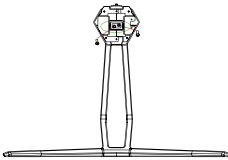


Assembly (Cont.)

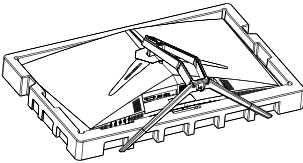
4. Take take out the connection block by pressing the detach button.



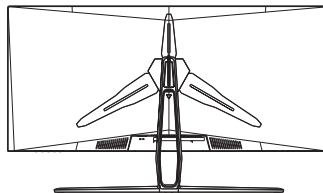
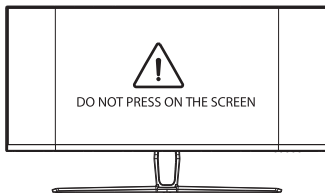
5. Attach the Connection Block to the pillar and lock with 2 screws.



6. Insert the connection block into the monitor back from bottom up, then push down the stand until it's firmly attached.



7. Hold the stand and the bottom foam, and put the monitor up straight then remove the bottom foam.



Assembly (Cont.)

NOTES:

- If you are attaching the display to a stand it is recommended to use a safety strap (not included) to anchor the monitor to the desk.

Removing the Stand

1. Place the monitor face-down onto the packaging foam.
2. Push down the detach button as shown in following picture, then slide up the stand from the bottom.



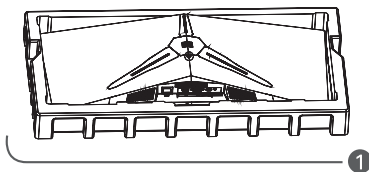
Assembly (Cont.)

Wall Mounting

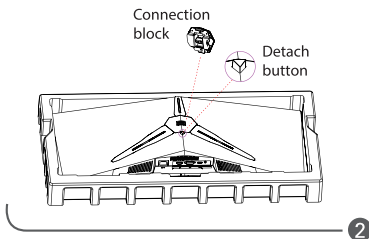
If you are mounting the monitor to a wall, make sure the wall is structurally safe for the weight of the monitor. Also make sure the mounting kit is compatible with the monitor display.

This monitor is compatible with a wall mount using VESA 75x75mm standard. When purchasing your wall mount bracket or swing arm, please make that it supports this standard.

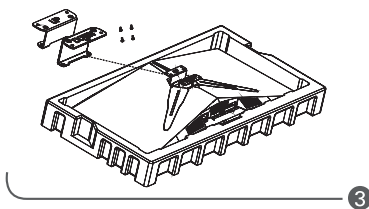
The wall mount bracket or swing arm is not included.



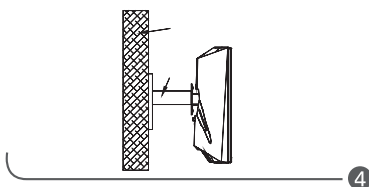
1. When opening the box, keep the monitor panel in its protective foam.



2. Take out the connection block by pressing down the detach button (if the block is already attached).



3. Use the 4pcs PM4x12mm screws to attach the mounting blocks to the monitor as shown in the illustration. Make sure the UP block is installed on the top and DOWN block is installed on the bottom of the monitor.



4. Install the wall mount bracket or swing arm and then attach the monitor to it (you will need to refer to your bracket or swing arm user manual for details on attaching a monitor).

Getting Started

Connecting the Monitor to a PC or other Device

Turn off the power before connecting the monitor to a PC.

There are three interface ports that are supported by this monitor: HDMI, and DP. You can use one of these ports to connect your monitor.

HDMI Interface

- Connect the HDMI cable (not supplied) to the HDMI port at the back of the monitor.

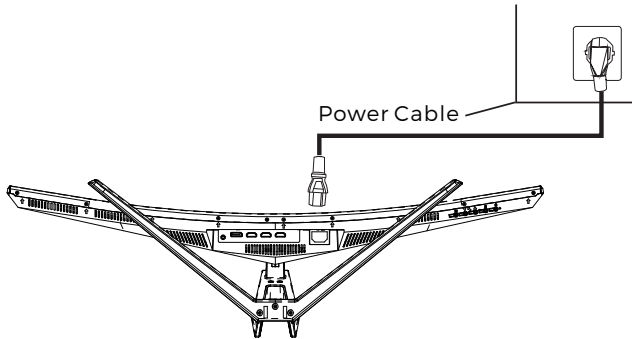
DP Interface

- Connect the DP cable (included) to the DP port of the monitor.

Controls and Connections

Power plug

- Connect the cable from the power adapter to the monitor. Then connect the power cable to the wall power socket.
- Switch it on at the wall, then press the power button on the monitor.



Audio Out Connection

- Connect your headphones or speakers to the Audio Out port.

NOTES:

- Audio Out works with an HDMI or DP connection, and the HDMI Audio Out must be enabled in the output device .
- For PCs, different operating systems may have different settings for HDMI Audio Out.

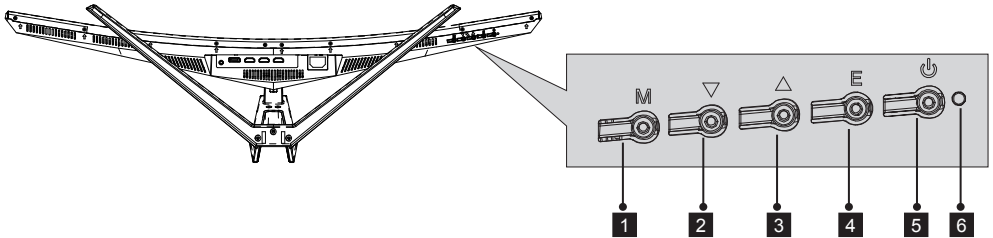
Controls and Connections (Cont.)

Control buttons

The panel on the bottom right edge of the monitor displays the following five symbols:

M (MENU), **▼** (DOWN/LEFT), **▲** (UP/RIGHT), **E** (EXIT), **⏻** POWER.

The corresponding buttons to access the following functions can be found on the back of the monitor.



Button	Function
M	Display the OSD (on-screen display) menu (see the section below), or enter a sub-menu.
▼	Adjust the value of the selected OSD control option, or move down or left between sub-menus in the OSD. Also operates as a hot key. Also functions as Volume + when no menu is displayed on-screen.
▲	Adjust the value of the selected OSD control option, or move up or right between sub-menus in the OSD. Also operates as a hot key. Also functions as Volume - when no menu is displayed on-screen.
E	Switch between the different inputs of the display. When the OSD is active, this button acts as the EXIT button and exits out of the option or OSD.
⏻	Switch power to the monitor on or off.
Power indicator light	The indicator lights up solid during normal operation when power is on and the signal is operating correctly. The light will flash when there is no signal. NOTE: The power adaptor is still in a current-carrying state when the monitor is switched off.

On Screen Settings

On-screen display (OSD)

The On-Screen Display (OSD) Menu may be used to adjust your monitor's settings and appears on screen after turning on the monitor and pressing the **M** button.

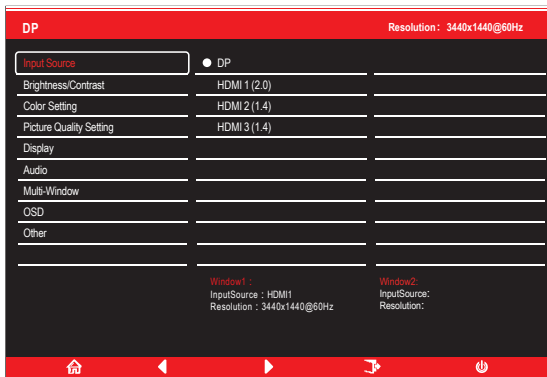


When using the monitor for the first time, settings will automatically adjust to optimal settings according to your computer's configuration and parts etc.

1. Press any one of the buttons (**M**, **▼**, **▲**, **E**, **⏻**) to activate the navigation window (Figure 1).



2. Press **M** button to enter the OSD screen (Figure 2).



3. Press **▼** or **▲** to browse functions.
 - a. Highlight the functions you want to set, and press **M** to enter the sub-menu.
 - b. Press **▼** or **▲** to browse the sub-menu, and press **M** to highlight the functions you want to set.
 - c. Press **▼** or **▲** to highlight the options, and press **M** to confirm the settings and exit the current screen.
4. Press **E** to exit the current screen.

OSD Menu Functions

Main Menu	Sub-Menu	Options	Description
Input Source	HDMI 1 (2.0); HDMI 2 (1.4); HDMI 3 (1.4)	NONE	Switch to HDMI signal input
	DP	NONE	Switch to DP signal input
Brightness/ Contrast	Brightness	0~100	Adjust display brightness
	Contrast	0~100	Adjust display contrast
	DCR	On	Turn on DCR function
		Off	Turn off DCR function
Color Setting	Gamma	1.8	Set Gamma add-in
		2.0	
		2.2	
		2.4	
		2.6	
	Picture Mode	Standard, Photo, Movie, Game, FPS, RTS	Set visual mode according to activity
	Color Temperature	Warm, Cool, User	Select color temperature
	Low Blue Light	0~100	Set blue light filtering level
	Hue	0~100	Adjust hue levels
	Saturation	0~100	Adjust saturation levels
Picture Quality Setting	Sharpness	0~100	Set display sharpness
	Response Time	Off, High, Middle, Low	Adjust response time
	Noise Reduction	Off, High, Middle, Low	Reduce the interference of image noise caused by signal source interference
	Super-Resolution	Off, High, Middle, Low	When the resolution of the display screen is low, this function can be turned on to enhance the image resolution
	Dynamic Luminous Control	On, Off	Compensate for gray scale display screen and strengthen the expression of gray scale
Display	Aspect Ratio	Wide Screen, 4:3, 1:1, Auto	Select on-screen aspect ratio
Audio	Mute	On, Off	Turn mute mode on/off
	Volume	0-100	Adjust audio volume
	Audio Source	HDMI 1 (2.0), HDMI 2 (1.4), HDMI 3 (1.4), DP	Select audio signal input via HDMI or DP

OSD Menu Functions

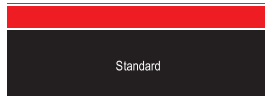
Main Menu	Sub-Menu	Options	Description
Multi-Window	Multi-Window	Off, PIP Mode, PBP 2Win	Select PIP/PBP modes according to the number of input signals etc.
	Sub Win2 Input	DP, HDMI1, HDMI2, HDMI3	Select according to input signal for PIP/PBP mode
	PIP Size	Small, Medium, Large	Adjust the PIP/PBP display window size
	PIP Position	TopRight, TopLeft, BottomRight, BottomLeft	Adjust the PIP/PBP window position
	Swap	NONE	Swap the two channel signal source of only the PIP/PBP 2 screens function
OSD	Language	English, 简体中文, 한국어, Русский, Español, 日本語, Français	Set OSD language
	OSD H-Position	0-100	Adjust the OSD's horizontal position
	OSD V-Position	0-100	Adjust the OSD's vertical position
	OSD Transparency	0-100	Set the OSD's overall transparency
	OSD Time Out	5-100	Set how long the OSD remains open after non-use
	OSD Rotation	Normal, 90, 180, 270	When the user flips the display, this function can also flip the OSD to achieve the best display angle
Other	DP Version	DP 1.1 DP 1.2	
	FreeSync (Adaptive Sync)	On, Off	Turn the FreeSync function on/off
	Reset	None	Reset monitor configurations

ECO Modes and Gameplus Switching

1. Press any one of the buttons (M, ▼, ▲, E, ⏻) to activate the navigation window.



2. Press ▼ button to switch ECO modes. These modes include Standard, Text, Movie, Game, FPS, and RTS and can be used to optimize settings according to your activity. Standard mode is suitable for most activities.



3. Press the ▲ button to switch between Gameplus modes. According to the needs of your game, choose the corresponding game icon. These game icons are primarily designed to optimize your aim during shooting games, though they can be used for other scenarios.



Troubleshooting

If your LED monitor operates abnormally, check the table below for a possible solution. If the problem is not listed in the table, stop using the monitor and contact the After Sales Support line.

Please note, however, that the following situations are normal:

- a) When you turn on the monitor for the first time, the OSD shown on the screen may deviate depending on your PC type. Adjust it according to the instructions in this manual.
- b) The screen may flash when you turn the monitor on for the first time. This is normal, as the screen is adjusting the power management to your computer's graphics card. To stop the screen flashing, switch the monitor off and turn it on again.
- c) The brightness of the screen may vary depending on your computer's graphics card.

General Problems with the Monitor

Problem	Solution
No display image: no signal.	<ul style="list-style-type: none"> • Is the power cord plugged into the socket firmly? • Have you pressed the power button? • Is the AC socket working? Plug in another item to test whether the power supply is OK. • Is your computer in screen saver mode? Press the keypad or move the mouse to check. • Is the computer's signal resolution within the recommended ratio for your monitor? • Is the monitor in power management mode? Press the keypad or mouse to check. • Is the computer power turned on? • Is the signal cable properly inserted?
The displayed result is too dark or too bright.	<ul style="list-style-type: none"> • Are contrast or brightness levels set appropriately? Increase or decrease, if necessary.
The displayed result is not in the centre.	<ul style="list-style-type: none"> • Is the computer's signal resolution within the recommended ratio for your monitor?
The displayed image is distorted or flickering.	<ul style="list-style-type: none"> • Does the voltage of the wall outlet match up with the voltage on the rating plate of the monitor? Please check. • Is the computer's signal resolution within the recommended ratio for your monitor?
The display is not synchronised (out of place).	<ul style="list-style-type: none"> • Is the signal cable properly inserted? • Is the computer's signal resolution within the recommended ratio for your monitor?

Troubleshooting (Cont.)

Screen is not focused	<ul style="list-style-type: none">• Check if the image signal cable is inserted properly.
Wrong or unusual colour	<ul style="list-style-type: none">• If the red, green or blue colour disappears, check to see if the signal cable is connected correctly. Ensure the cable is firmly seated. try testing the monitor on another PC.

Supported resolution and refresh rate

Supported DisplayPort

RESOLUTION & REFRESH RATE
800 x 600 @ 60Hz, 75Hz
1024 x 768 @ 60Hz, 75Hz
1280 x 720 @ 60Hz
1280 x 768 @ 60Hz
1280 x 960 @ 60Hz
1280 x 1024 @ 60Hz
1366 x 768 @ 60Hz
1440 x 900 @ 60Hz
1600 x 900 @ 60Hz
1680 x 1050 @ 60Hz
1920 x 1080 @ 50Hz, 60Hz, 100Hz, 120Hz
1920 x 1200 @ 60Hz
2560 x 1080 @ 60Hz, 120Hz
3440 x 1200 @ 60Hz, 120Hz

Supported resolution and refresh rate(Cont.)

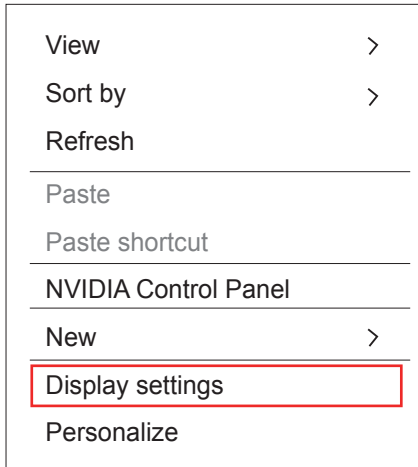
Supported HDMI Resolution

RESOLUTION & REFRESH RATE		
HDMI1	HDMI2	HDMI3
800 x 600 @ 60Hz, 75Hz	800 x 600 @ 60Hz, 75Hz	800 x 600 @ 60Hz, 75Hz
1024 x 768 @ 60Hz, 75Hz	1024 x 768 @ 60Hz, 75Hz	1024 x 768 @ 60Hz, 75Hz
1280 x 720 @ 60Hz	1280 x 720 @ 60Hz	1280 x 720 @ 60Hz
1280 x 768 @ 60Hz	1280 x 768 @ 60Hz	1280 x 768 @ 60Hz
1280 x 960 @ 60Hz	1280 x 960 @ 60Hz	1280 x 960 @ 60Hz
1280 x 1024 @ 60Hz	1280 x 1024 @ 60Hz	1280 x 1024 @ 60Hz
1366 x 768 @ 60Hz	1366 x 768 @ 60Hz	1366 x 768 @ 60Hz
1440 x 900 @ 60Hz	1440 x 900 @ 60Hz	1440 x 900 @ 60Hz
1600 x 900 @ 60Hz	1600 x 900 @ 60Hz	1600 x 900 @ 60Hz
1680 x 1050 @ 60Hz	1680 x 1050 @ 60Hz	1680 x 1050 @ 60Hz
1720 x 1440 @ 60Hz	1720 x 1440 @ 60Hz	1720 x 1440 @ 60Hz
1920 x 1080 @ 50Hz, 60Hz, 100Hz	1920 x 1080 @ 50Hz, 60Hz, 100Hz	1920 x 1080 @ 50Hz, 60Hz, 100Hz
1920 x 1200 @ 60Hz, 100Hz	1920 x 1200 @ 60Hz, 100Hz	1920 x 1200 @ 60Hz, 100Hz
1920 x 1440 @ 60Hz	1920 x 1440 @ 60Hz	1920 x 1440 @ 60Hz
2560 x 1080 @ 60Hz	2560 x 1080 @ 60Hz	2560 x 1080 @ 60Hz
2560 x 1440 @ 60Hz	2560 x 1440 @ 60Hz	2560 x 1440 @ 60Hz
3440 x 1440 @ 60Hz, 100Hz	3440 x 1440 @ 60Hz	3440 x 1440 @ 60Hz

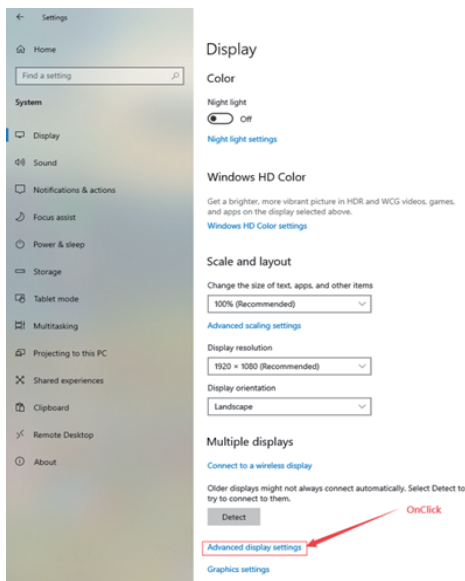
How to adjust the refresh rate

How to choose a high refresh rate for WIN10

1. Right-click “display settings” on the desktop; (Pls refer to the below picture)

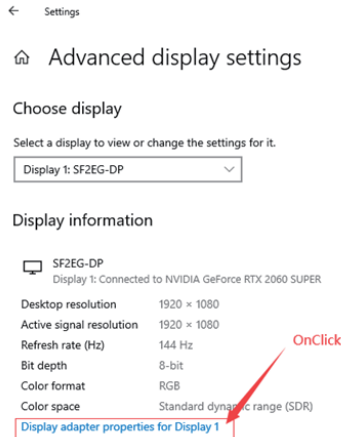


2. Click “Advanced display settings” (Pls refer to the below picture)

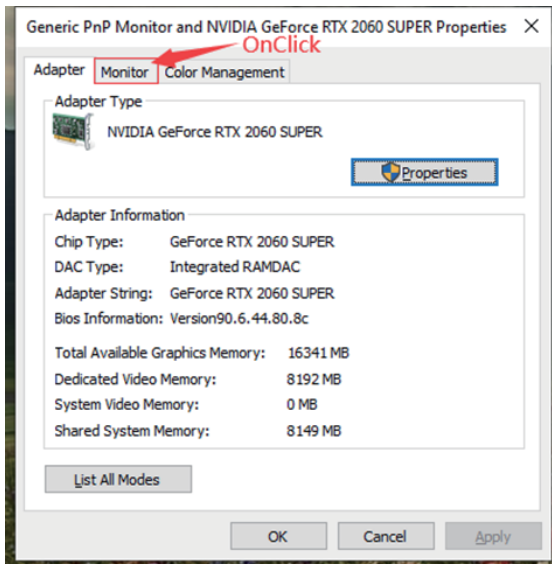


How to adjust the refresh rate(Cont.)

3. Click “Display adapter properties of Monitor 1” (Pls refer to the below picture)

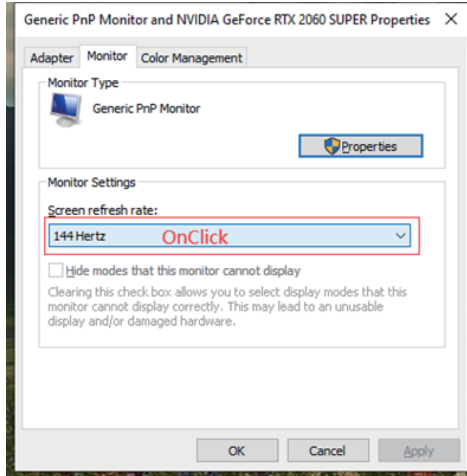


4. Click the “monitor” (Pls refer to the below picture)

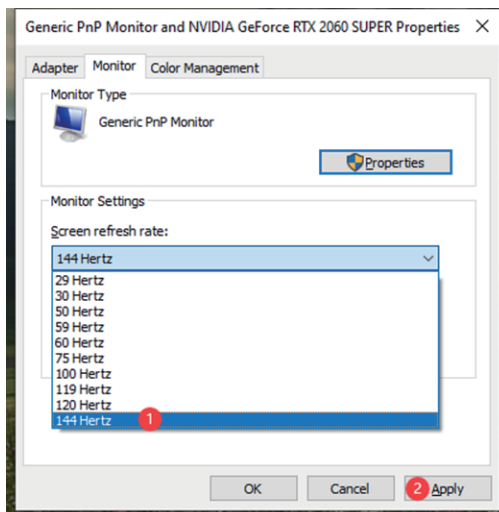


How to adjust the refresh rate(Cont.)

5. Click “Screen Refresh Rate(S)”: Options (Pls refer to the below picture)

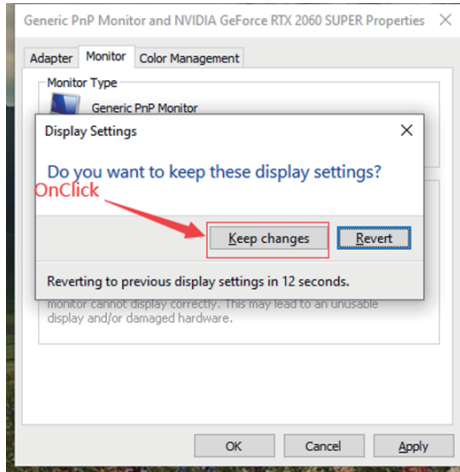


6. Select the refresh rate which you like, Then click the “Apply” (Pls see the below picture)
 (ps : The highest refresh rate is depends on the monitor which support, Pls refer to the below picture)



How to adjust the refresh rate(Cont.)

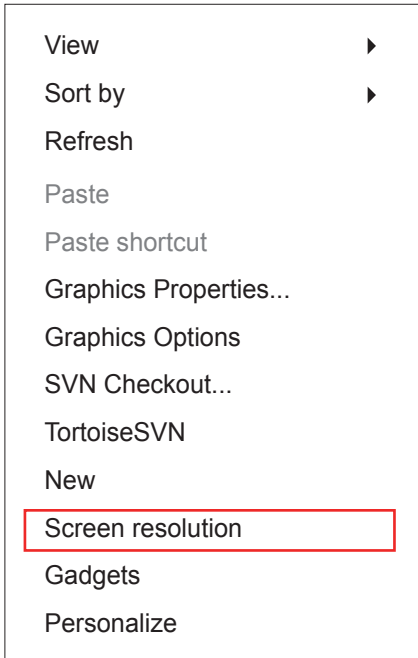
7. After clicking the “apply”, you must click “keep changes” then the monitor switch to refresh rate which you like.(Pls refer to the below picture)



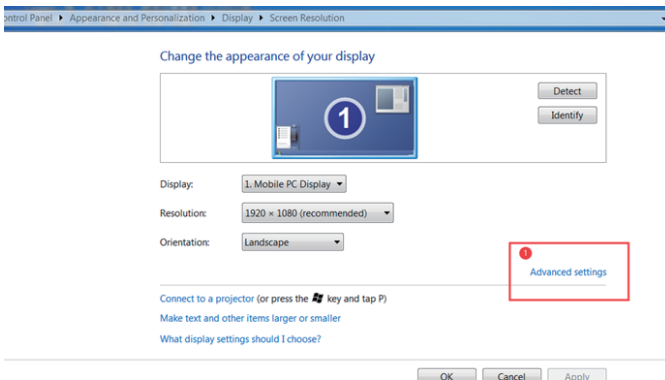
How to adjust the refresh rate(Cont.)

How to choose a high refresh rate for WIN7

1. Right-click "Screen resolution (C)" on the desktop;(Pls refer to the below picture)

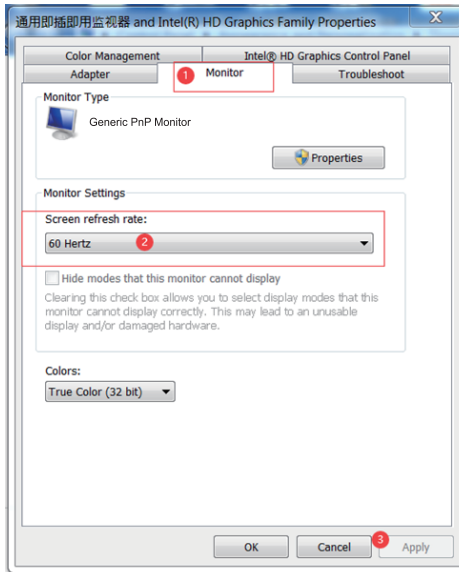


2. Click on "Advanced Settings" ; (Pls refer to the below picture)



How to adjust the refresh rate(Cont.)

3. Click "Monitor" and Choose "Monitor Settings", then choose any refresh rate which you like, Finally Click the "Apply".



Specifications

Item	Detail
Model Number	DGVIEW201
Screen Size	35"
Curvature	1800R
Viewing Angle	178° (H)/178° (V)
Aspect Ratio	21:9
Resolution	3440x1440p
Backlight	E-LED
Typical Brightness	250
Default Color Temperature	6500
Contrast Ratio	3000:1(Static); 1000000:1(Dynamic)
Dot Pitch	0.2382(H) x 0.2402(V)
Response Time	GTG 4ms
Refresh Rate	100Hz
Ports	HDMI x3, DP x1, Audio Output x1
Power	AC 100-240V, 50/60Hz 2.0A
Consumption	Max:70W, Typical: 60W, Standby ≤ 0.5W
OSD Language	English, 简体中文, 한국어, Русский, Español, 日本語, Français
Environmental Temperature & Humidity	Operating temperature: 32°F to 95°F
	Storage temperature: -4°F to 140°F
	Operating relative humidity: RH 10% to 90% (non-condensation)
Wall Mounting	75mm x 75mm
Dimension (With Stand)	837(W) x 246(D) x 483(H)
Weight (Net/Gross Weight)	8.6 kg/10.5 kg

Regulatory Compliance

Notice for FCC



This device complies with Part 15 of the FCC rules. Operation is subject to the following two conditions: (1) this device may not cause harmful interference, and (2) this device must accept any interference received, including interference that may cause undesired operation.

This equipment has been tested and found to comply with the limits for a Class B digital device, pursuant to Part 15 of the FCC Rules. These limits are designed to provide reasonable protection against harmful interference in a residential installation. This equipment generates, uses and can radiate radio frequency energy and, if not installed and used in accordance with the instructions, may cause harmful interference to radio communications. However, there is no guarantee that interference will not occur in a particular installation. If this equipment does cause harmful interference to radio or television reception, which can be determined by turning the equipment off and on, the user is encouraged to try to correct the interference by one or more of the following measures:

- Reorient or relocate the receiving antenna.
- Increase the separation between the equipment and receiver.
- Connect the equipment into an outlet on a circuit different from that to which the receiver is connected.
- Consult the dealer or an experienced radio/TV technician for help.



The terms HDMI and HDMI High-Definition Multimedia Interface, and the HDMI Logo are trademarks or registered trademarks of HDMI Licensing Administrator, Inc. in the United States and other countries.

Other Useful Information(Cont.)

Responsible Disposal

Packaging:The packaging of this product has been selected from environmentally friendly materials and can usually be recycled. Please ensure these are disposed of correctly. Plastic wrapping can be a suffocation hazard for babies and young children, please ensure all packaging materials are out of reach and are safely disposed of. Please ensure they are offered for recycling rather than throwing these materials away.

Monitor:At the end of its working life, do not throw this monitor out with your household rubbish. An environmentally friendly method of disposal will ensure that valuable raw materials can be recycled and used again. Contact your local authority for your nearest recycling centre. Electrical and electronic items contain materials and substances which, if handled or disposed of incorrectly, could potentially be hazardous to the environment and human health.

Manufacturer's 1-Year Limited Warranty

The manufacturer warrants that all parts and components are defect free in materials and workmanship for 1 year. This warranty is valid only in accordance with the conditions set forth below:

1. The warranty extends only to the original consumer purchaser and is not transferable. In addition, proof of purchase must be demonstrated.
2. This limited warranty is the only written or express warranty given by the manufacturer. Any implied warranty of merchantability or fitness for a particular purpose on this product is limited in duration to the duration of this warranty. Some states do not allow limitations on how long an implied warranty lasts, so the above limitation may not apply to you.
3. This warranty gives you specific legal rights. You may also have other rights which vary by state

Procedure for Replacement or Return within the 1 Year:

To return the product for replacement or refund within the 1 year, the original purchaser must pack the product securely and send it postage paid with a description of the reason for replacement or refund, proof of purchase, and include your order number on the package, to the following address:

Deco Gear
80 Carter Drive
Edison, NJ 08817

For Technical and Warranty Support

 **1-800-572-3224**

 **WWW.DECOGEAR.COM**

 **80 Carter Dr.**

 **Edison, NJ, 08817**



dec  **gear**®

物料号码	902-V3G6W-20002-B		
厂内型号	V3G6W	厂外型号	DGVIEW201
物料名称	说明书	品 牌	Deco Gear
协力厂商		日 期	20191224
规 格	140*210mm 120g双铜+80g双铜骑马钉彩印		
要 求			
版 本	V03	设 计	liumeihong
确 认		核 准	