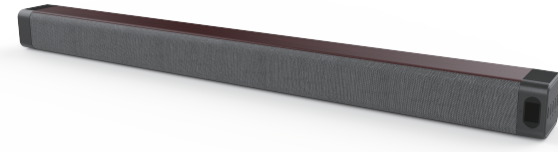


折线

折线

decohome MODEL:DGSB200WOD



USER MANUAL

KIND REMINDER

TV Audio Setting for Soundbar

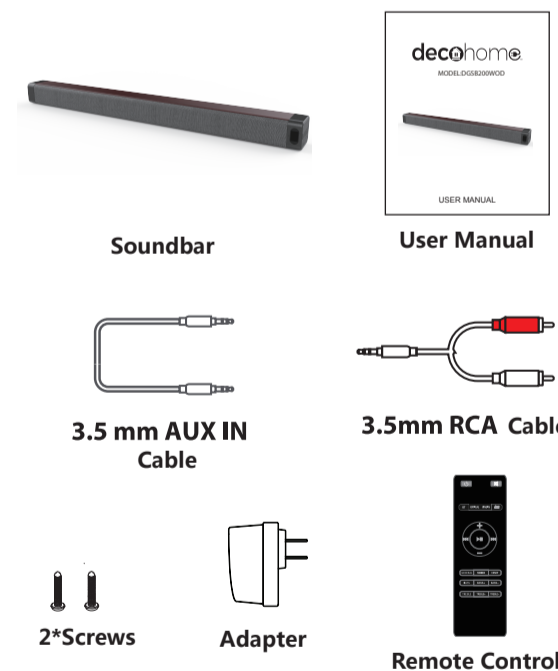
Step1: Select "Sound" on the main menu of your tv and select "Speaker Settings" tab, please select "Audio Out". This is to ensure audio output from TV.

Step2: Select "Sound" tab, select "Additional Settings". Please pay attention: Different TV model may have different menu option, please find and select "Audio Format" tab.

Step3: Select "HDMI Audio Format" settings, turn on PCM settings.

Step4: Select "Audio Format" settings, turn on PCM settings. Please pay attention: Dolby Digital or DTS Neo 2:5 audio format is not supported.

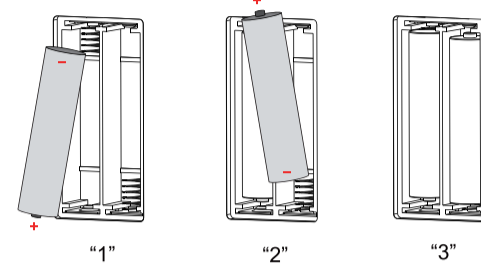
In the box



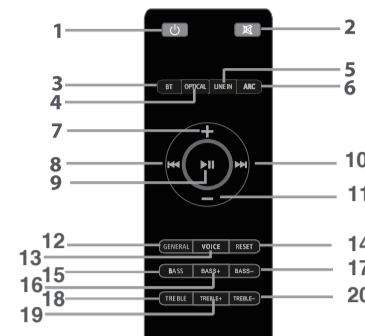
Installing the battery

The battery of the remote control is two AAA batteries. If the batteries need to be replaced, gently open the battery cover of the remote control, take 2*AAA battery(NOT INCLUDED) and place the positive and negative electrodes of the batteries in the remote control in the correct direction. Finally, return the battery cover to the remote control.

NOTE: The remote control shall be placed in the correct direction of positive and negative pole when installed.



REMOTE CONTROL

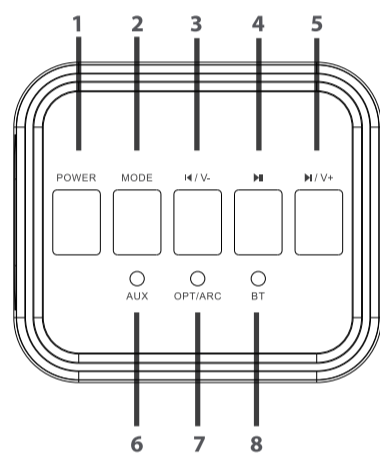


- 1. [POWER] Key: Standby Power ON/OFF
2. [MUTE] Key: Mute volume
3. [BT] Key: BT mode
4. [OPTICAL] Key: OPTICAL mode
5. [LINE IN] Key: LINE IN mode
6. [ARC] Key: ARC mode
7. [VOL+] Key: Increase volume
8. [PREV] Key: Skip to previous track
9. [PLAY] Key: Play/pause music
10. [NEXT] Key: Skip to next track
11. [VOL-] Key: Decrease volume
12. [GENERAL] Key: GENERAL mode
13. [VOICE] Key: VOICE mode
14. [RESET] Key: Restore settings
15. [BASS] Key: BASS mode
16. [BASS+] Key: Increase BASS volume
17. [BASS-] Key: Decrease BASS volume
18. [TREBLE] Key: TREBLE mode
19. [TREBLE+] Key: Increase TREBLE volume
20. [TREBLE-] Key: Decrease TREBLE volume

NOTE: Remote battery type 3xAAA NOT INCLUDED.

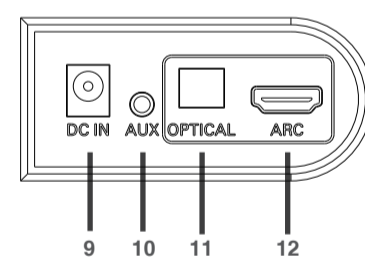
Location of controls

SIDE PANEL



- 1.[POWER] button : Power ON/OFF
2.[MODE] button : Switch modes
3.[VOL-/V-] button : decrease volume /skip to previous track
4.[PLAY] button : Play/pause track
5.[VOL+/V+] button : increase volume /skip to next track
6.[AUX] : AUX IN indicator light
7.[OPT/ARC] : OPTICAL LED indicator light / ARC LED indicator light
8.[BT] : BT LED indicator light

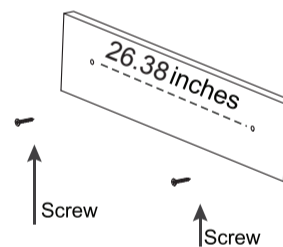
BACK PANEL



- 9.[DC IN] : DC IN jack
10.[AUX] : Input AUX IN
11.[OPTICAL] : Input OPTICAL
12.[ARC] : Input ARC

Mounting the speaker

- 1. Measure a width of 26.38 inches on the wall.
2. Mark the position of the mounting screws on the wall using a pencil.
3. Drill the supplied screws directly into the marks that you have made on the wall and leave approximately 0.3 inch length to hook the Wireless Sound Bar.
4. Put the Wireless Sound Bar onto the mounting screws. Make sure they are firm and stable.



Operation process

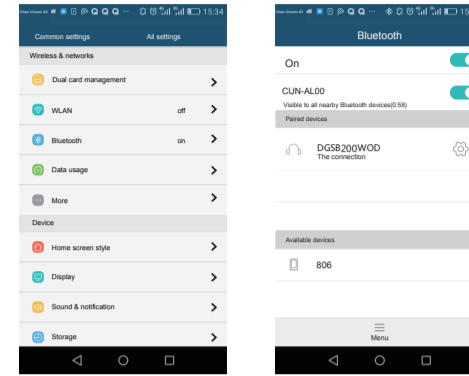
- 1. Connect the DC power cord into a wall socket.
2. Turn the speaker on by pressing the [POWER] button on the speaker or remote control.

3.1 Bluetooth mode operation

- 3.1.1 Press the [MODE] button on the speaker or the [INPUT] button on the remote control. When [BT] bluetooth indicator lights flash blue and a "drip" sound is heard, then go into bluetooth pairing mode.
3.1.2 During the pairing process, keep the speaker and bluetooth device within 10 meters of each other.
3.1.3 Set your phone or other bluetooth device to bluetooth status.

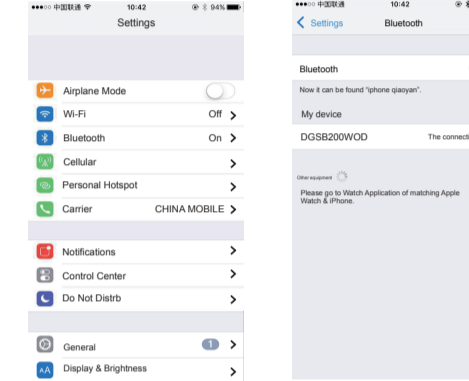
Bluetooth Connection Method for Android system:

- 1. Go to SETTINGS> BLUETOOTH(make sure bluetooth is turned ON)
2. When your bluetooth enabled device finds the speaker, select "DGSB200WOD" from the list of found devices. When succeeding pairing, you will hear "beep beep". [BT] bluetooth indicator light appears normally on. When play the music, the blue led light will flash slowly.



Bluetooth Connection Method for iPhone IOS system:

- 1. Go to SETTINGS> BLUETOOTH(make sure bluetooth is turned ON)
2. When your bluetooth enabled device finds the speaker, select "DGSB200WOD" from the list of found devices. When paired successfully, you will hear "beep beep". [BT] bluetooth indicator light appears on. When playing music, the blue led light will flash slowly.



NOTE: It is recommended to watch video in HDMI ARC/OPTICAL/AUX IN mode

3.2 Optical/ARC mode operation

- 3.2.1 Please insert one connection port of OPTICAL fiber into the [OPTICAL] fiber input jack or [ARC] fiber input jack first, and then insert another connection port into the socket of media playback device.
3.2.2 Press the (MODE) button on the speaker or the (INPUT) button on the remote control. When [OPT/ARC] optical fiber indicator lights up red light, then enter the optical fiber mode state. When [OPT/ARC] optical fiber indicator lights up blue light, then enter the ARC fiber mode state.

3.2.3CEC function: When the TV and the speaker have been connected to the HDMI cable, if the TV has the CEC function, the following operations can be performed:
1. Use the TV remote control volume button to change the volume increase and decrease, the soundbar's volume will increase and decrease synchronously
2. Use the TV remote control switch button to turn on / off the TV, the speaker will turn on / off synchronously. And the soundbar will auto turn to HDMI ARC Mode

NOTE: Prior to usage, please make sure your TV has optical / ARC output. Then turn on PCM settings of your TV when connected in optical / ARC mode in case it doesn't have sound.

3.3 LINE IN mode operation

- 3.3.1 Insert one of the connection ports of the audio cable into the [AUX] jack, and then insert another connection port into the socket of the media playback device.
3.3.2 Press the (MODE) button on the speaker or the (INPUT) button on the remote control. When [AUX] indicator lights up red light, enter AUX IN state.

NOTE: Prior to usage, please make sure your TV has AUX output in case it doesn't have sound.

3.4 Volume control operation

- 3.4.1 Short press the [VOL-/V-] button on the speaker or the [VOL-] button on the remote control to reduce the volume.
3.4.2 Short press the [VOL+/V+] button on the speaker or the [VOL+] button on the remote control to increase the volume.
3.4.3 Press the [TREBLE] button on the remote control to reduce the treble volume.
3.4.4 Press the [TREBLE+] button on the remote control to increase the treble volume.
3.4.5 Press the [BASS-] button on the remote control to reduce the bass volume.
3.4.6 Press the [BASS+] button on the remote control to increase the bass volume.

3.5 Skipping and play/pause Songs operation

- 3.5.1 Long press the [PREV] button on the speaker or the [PREV] button on the remote control to skip to the previous song.
3.5.2 Long press the [NEXT] button on the speaker or the [NEXT] button on the remote control to skip to the next song.
3.5.3 Press the [PLAY] button on the speaker or the remote control to play or pause music.

Specification

- Size : 940*84*73mm
• BT working distance : 10m
• S/N : ≥65db
• BT IC : 4.1
• Output power : 60W
• Power DC : DC 18V
• Frequency Response : 120Hz~16KHz
• Distortion : <0.5%
• Driver Size : 2.5*4

Malfunction analysis:

Consult the after-sale service for help.

Legal information:

Any copy, changes or modifications of the user manual not expressly approved unless dealer's permission.

Caution:

- 1. Do not take this apparatus apart or repair it.
2. Do not use this apparatus near water and humid.
3. Clean only with a dry cloth.

Limited Warranty:

You may within 1 year from your original date of purchase return it to the authorized service for repair.

Cautions and warnings:

- 1. Do not use the bluetooth speaker near water or humid; do not use the device near the bathtub, water tank, swimming pool and so on.
2. Do not install the bluetooth speaker in the hot or cold environment.
3. Do not expose the device in the sunshine directly.
4. Do not use the device near fire, such as, stove, candle or fireplace and so on.
5. Do not use abrasive cleaning solvents to clean the bluetooth speaker.

This device complies with part 15 of the FCC Rules.

Operation is subject to the following two conditions: (1) this device may not cause harmful interference, and (2) this device must accept any interference received, including interference that may cause undesired operation.

decohome

Manufacturer's 1-Year Limited Warranty

The manufacturer warrants that all parts and components are defect free in materials and workmanship for 1 year. This warranty is valid only in accordance with the conditions set forth below:

- 1. The warranty extends only to the original consumer purchaser and is not transferable. In addition, proof of purchase must be demonstrated.
2. This limited warranty is the only written or express warranty given by the manufacturer. Any implied warranty of merchantability or fitness for a particular purpose on this product is limited in duration to the duration of this warranty. Some states do not allow limitations on how long an implied warranty lasts, so the above limitation may not apply to you.
3. This warranty gives you specific legal rights. You may also have other rights which vary by state

Procedure for Replacement or Return within the 1 Year:

To return the product for replacement or refund within the 1 year, the original purchaser must pack the product securely and send it postage paid with a description of the reason for replacement or refund, proof of purchase, and include your order number on the package, to the following address:

Deco Home
80 Carter Drive
Edison, NJ 08817

备注：送大货样，工程部确认尺寸、颜色及丝印内容后方可做大货

Table with production details: 生产单号, 型号: S5AM-6, 料号: 416-0S5AH081-02R, 物料名称: 说明书, 其它要求: 105g铜版纸, 黑白 正反面印刷, 需按要求折叠, 折叠后成品尺寸: 85*110mm, 内容以工程承认样品为准. Includes a signature table with '美工', '电子', '结构', '审核'.